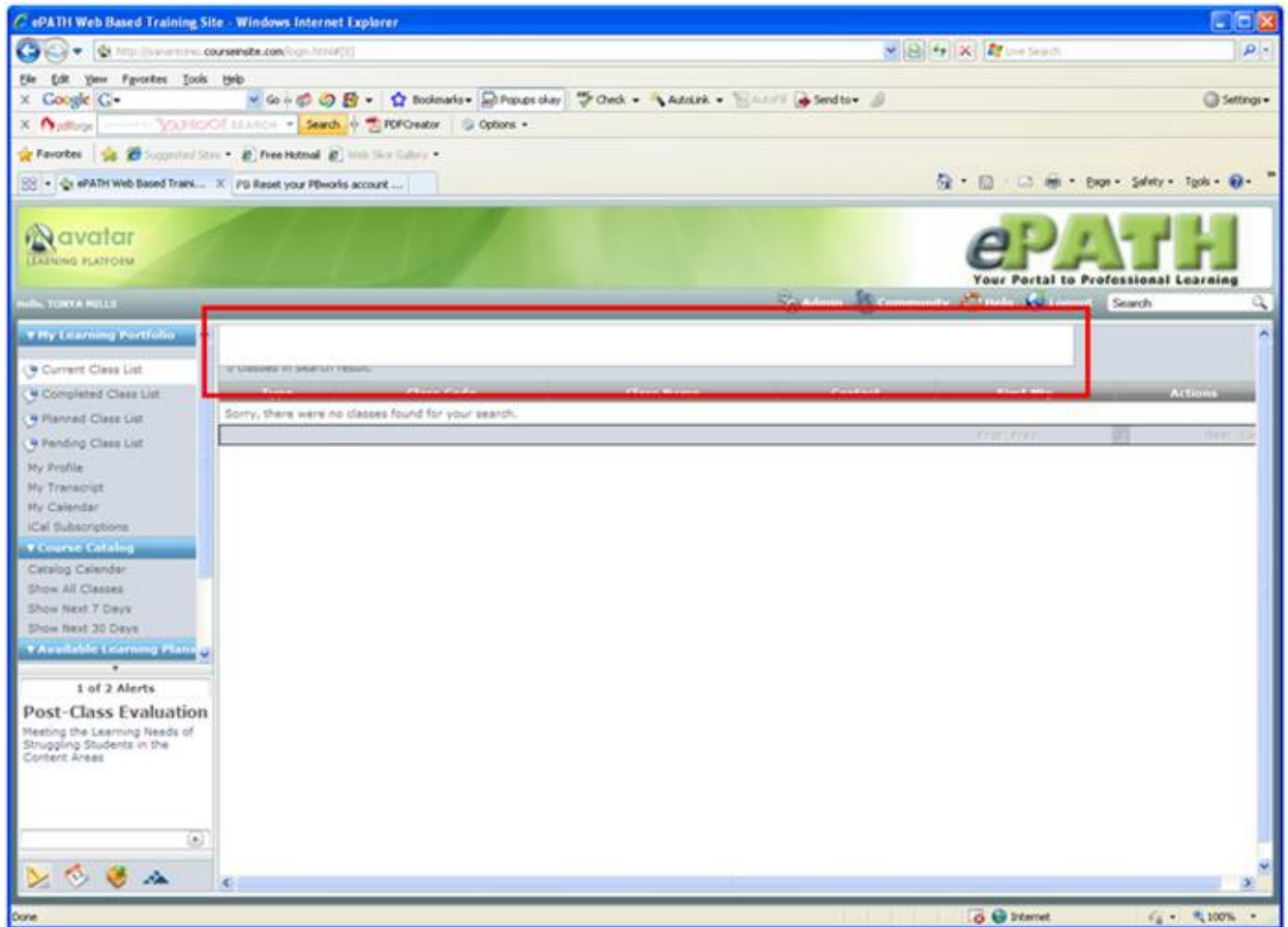


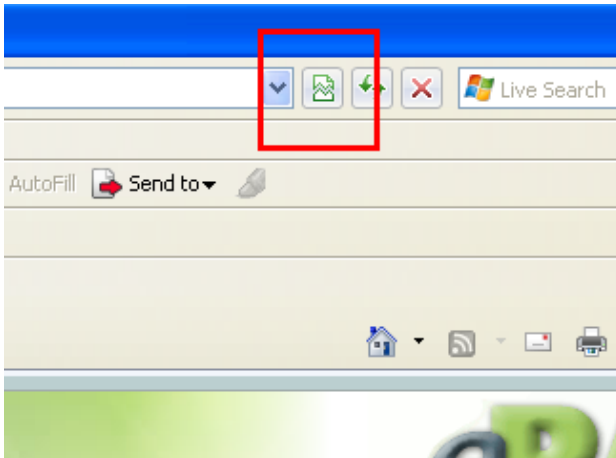
SAISD Epath: IE8 Solutions (1 and 2)

Problem 1:

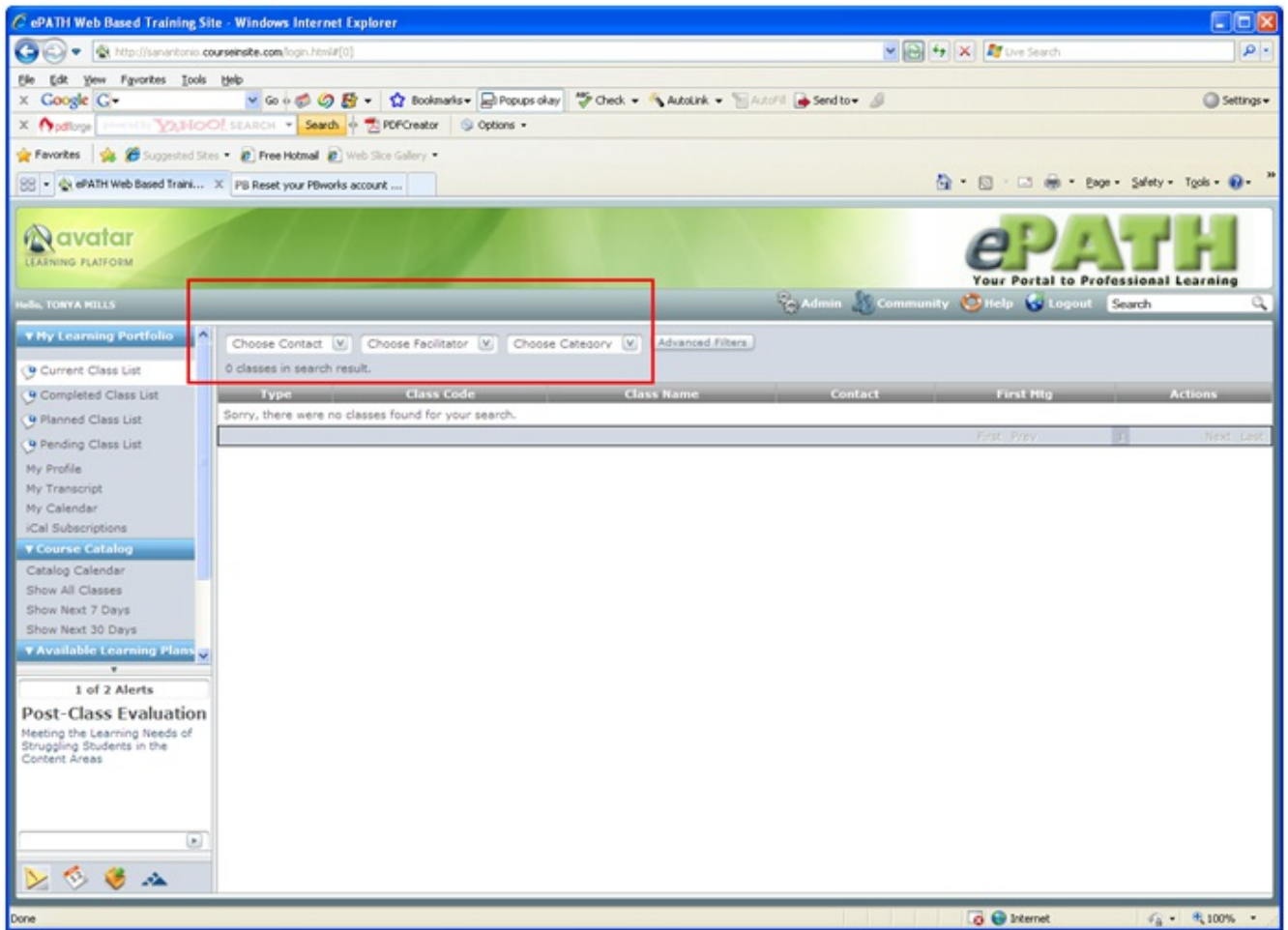
Problem: Users in ePath with IE8 are unable to see the top of the main content window (a white box covers up the content):



- Click on the compatibility button located in between the URL field and the refresh button at the top:

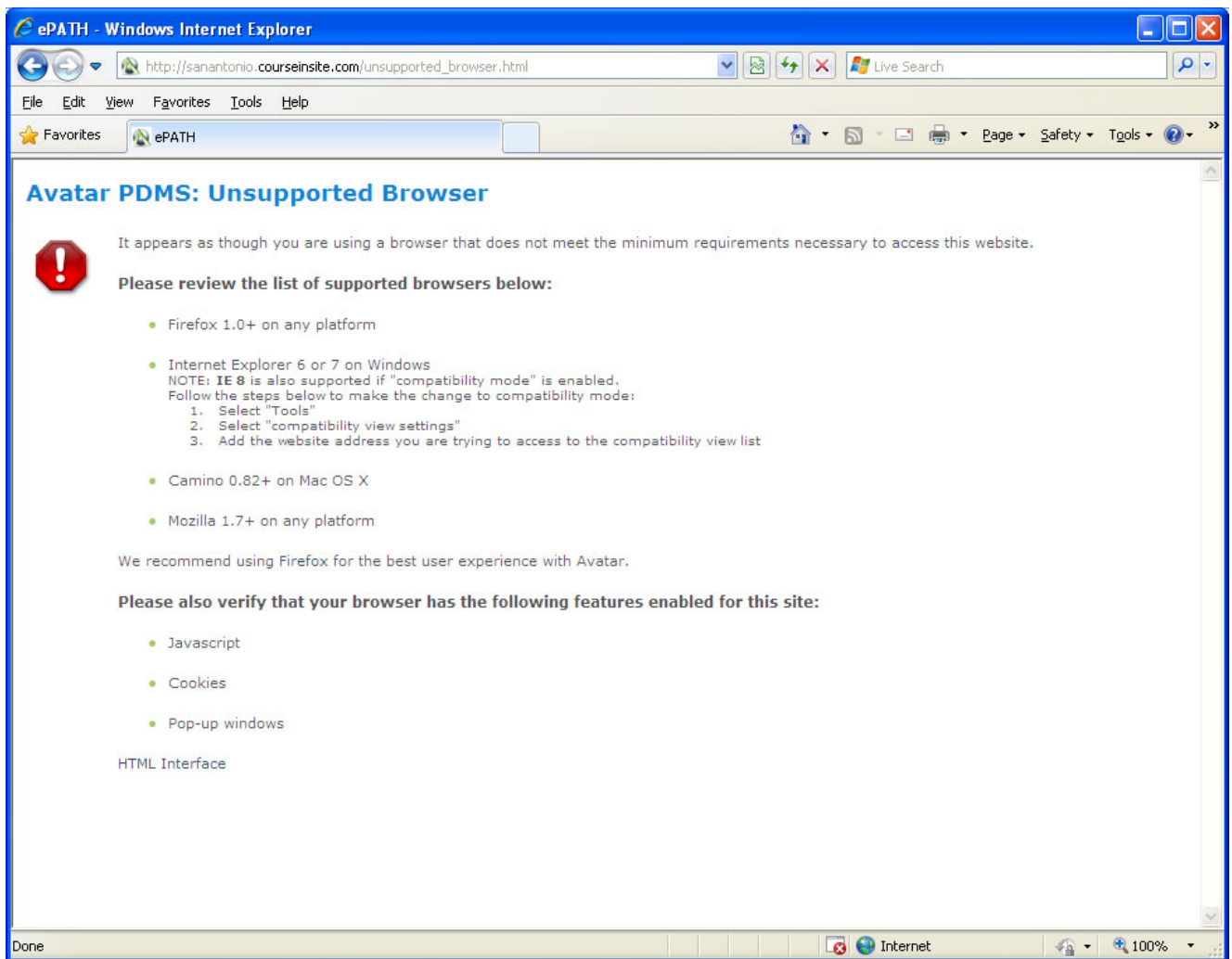


- ePath or courseinsite website will now revert to IE7 instead of IE8 and users will now be able to view the top of the content area:

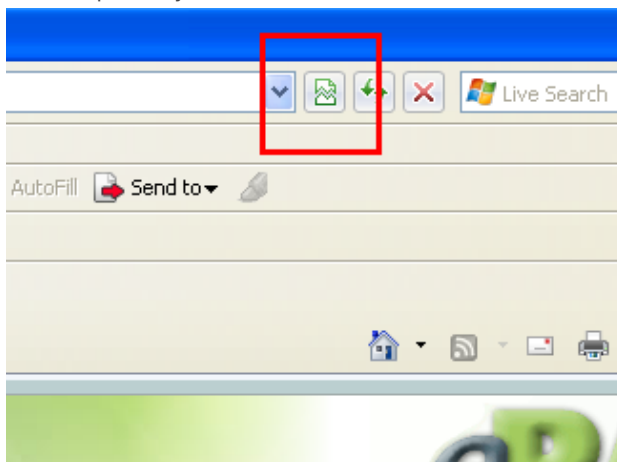


Problem 2:

Problem: Users in ePath with IE8 are unable to see the entire ePath login screen (see below):



- Click on the compatibility button located in between the URL field and the refresh button at the top:



- ePath or courseinsite website will now revert to IE7 instead of IE8 and users will now be able to view the ePath website:

ePATH Web Based Training Site - Windows Internet Explorer

http://sanantonio.courseinsite.com/login.html#[0]

File Edit View Favorites Tools Help

★ Favorites ePATH Web Based Training Site

Avatar LEARNING PLATFORM

ePATH Your Portal to Professional Learning

Help Login Search

▼ User Tools

- Login
- ▼ Course Catalog
 - Catalog Calendar
 - Show All Classes
 - Show Next 7 Days
 - Show Next 30 Days

welcome to Avatar PDMS™

Username:

Password:

Login

Forgot Username or Password

Course Catalog search for a course

Course Calendar view the complete calendar

Welcome System Requirements Newest Courses

Welcome to ePath, San Antonio ISD's electronic professional learning and development tracking and support system.

Please be aware that not only can you register for face to face workshops, but also 100% online, self-paced courses. Find out more at <http://itls.saisd.net/epath>.

Done Internet 100%